

LED Automotive Light Series Technical Data Sheet

Model No.: L-ALXXDA13R



Features:

- ◇ High intensity.
- ◇ Low power consumption.
- ◇ Long life.
- ◇ Voltages available: 12V DC.
- ◇ Available for all color.
- ◇ Easy-equipped.

Description:

It is has high intensity by using High brightness LED. The colors of lighting can be white, warm white, red, yellow, blue, green and other colors.

Application:

- ◇ Entertainment Lighting.
- ◇ Architectural lighting.
- ◇ City Beautification.
- ◇ Landscape lighting.
- ◇ Furniture decoration.
- ◇ Portable lighting.
- ◇ Other light sources.

Device Selection Guide:

Part No.	Color	Q'ty of LEDs (pcs)	Color Temp / Wavelength Typ (kelvin/nm)	Total Lumens Typ (lm)
L-ALW6DA13R	Warm White	13	3000K	32
L-ALWDA13R	White	13	8000K	35
L-ALBDA13R	Blue	13	470nm	7.2
L-ALGDA13R	Green	13	525nm	30
L-ALYDA13R	Yellow	13	590nm	18
L-ALRDA13R	Red	13	625nm	14.8

Absolute Maximum Ratings (Ta = 25℃)

Items	Symbol	Rating	Units
Operating Voltage	Viac	DC13	V
Operating frequency	Freo	---	Hz
Power Dissipation	Pa	1.5	W
Operating Temperature	Tope	-30 - +50	℃
Storage Temperature	Tsto	-40 - + 80	℃

Typical Performance (Ta = 25℃):

Items	Symbol	Min	Typ.	Max.	Units
Input Voltage	V	11	12	13	V
Beam Pattern	BP	---	360	---	Deg
Total Length	Lmod.	---	46.9	---	mm
Net Weight	Wei.	---	10.2	---	g
Estimated Life [1]	Life	---	50000	---	hour
Optimized Thermal Management (Body Temperature)	/	---	---	45	℃

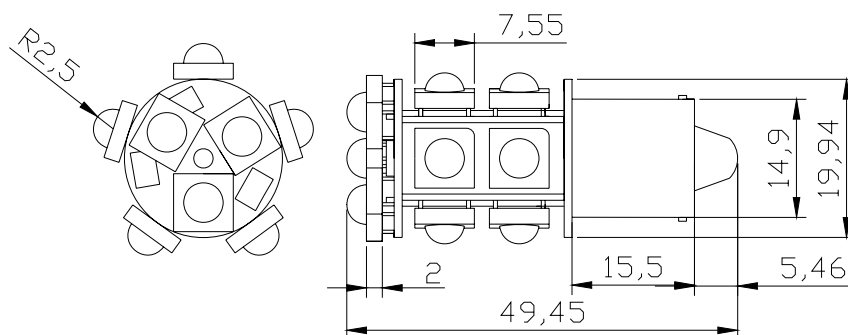
Notes:

- [1]** The BA9S base automotive Light can work 4-8 hours per day, and the lifetime can reach 50,000 hours, even longer. All the parameters are tested by Lucky Light's equipment.
- Rank ratings will be determined by Lucky Light, if you have any request or queries for Lucky Light products, please directly contact salesman.
- The brightness and forward voltage can be designed according to customer specifications.
- Specifications are subject to change without notice.

Product picture



Product Dimensions:



Notes:

1. All dimensions unit in mm.
2. The tolerance is $\pm 0.2\text{mm}$ unless otherwise noted.