

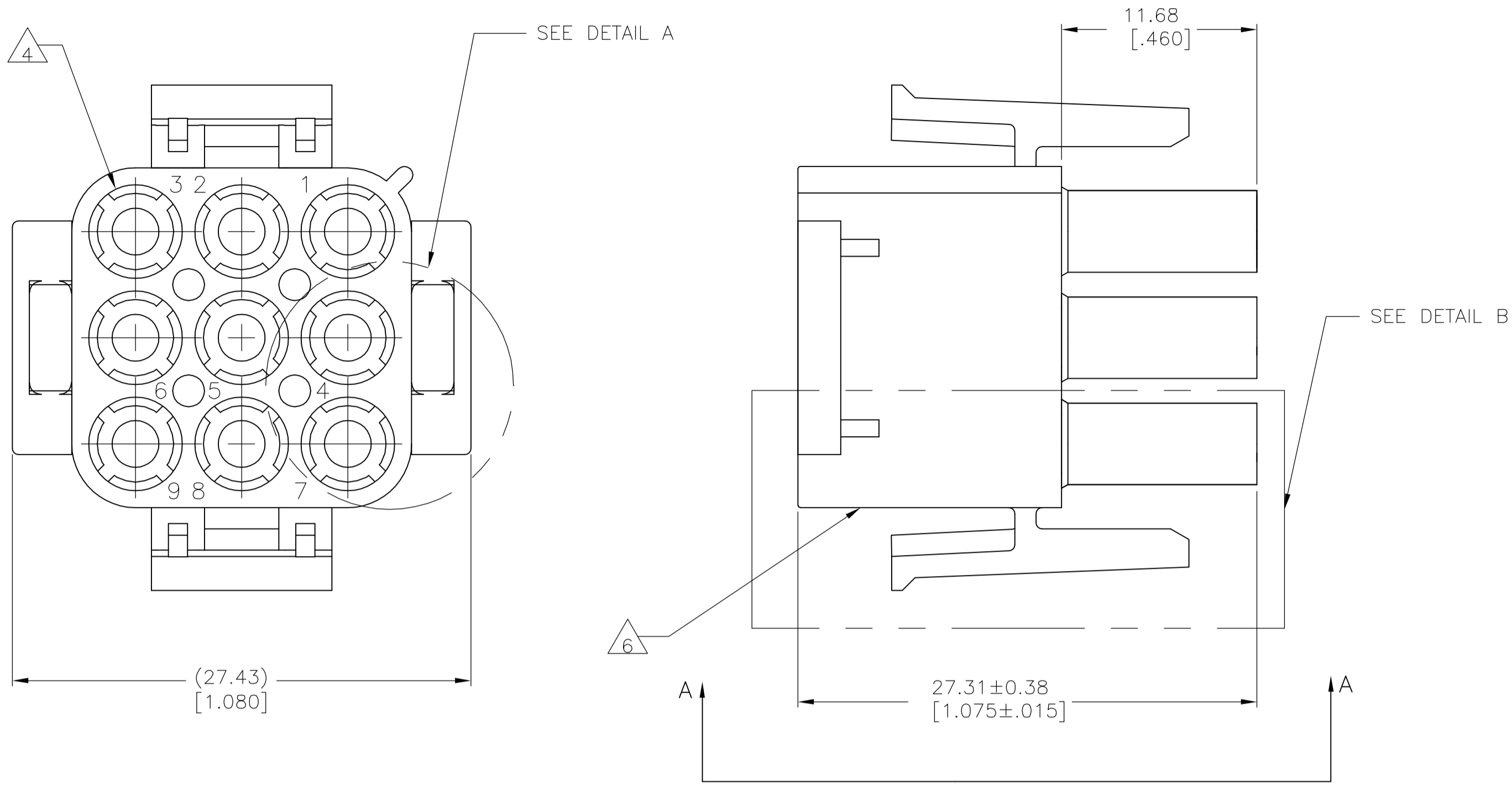
LOC	DIST	REVISIONS			
CM	00	P	LTR	DESCRIPTION	DATE
		AA1		ECO-06-018902	17AUG06

D

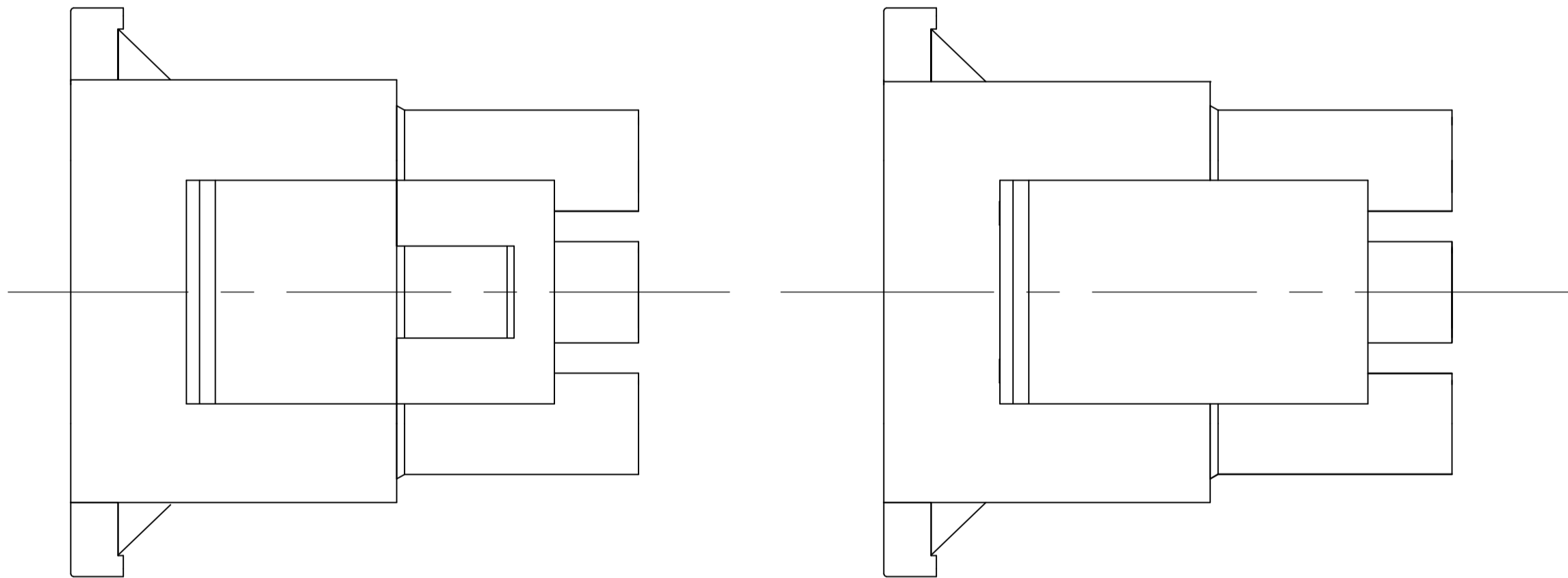
C

B

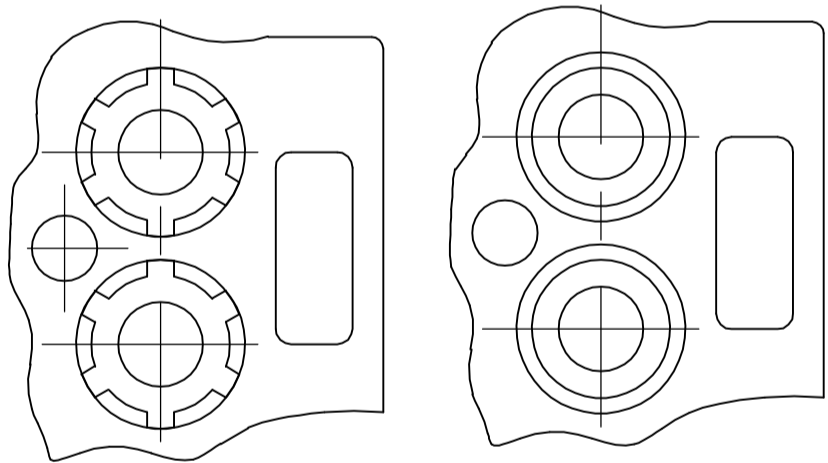
A



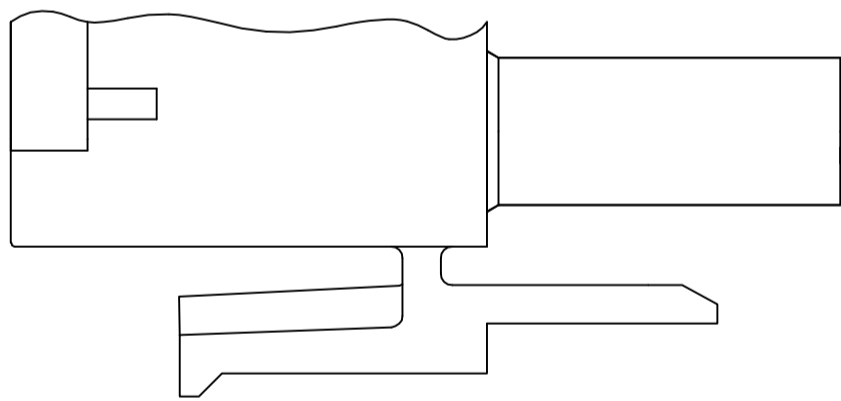
- MATES WITH APPROPRIATE UNIVERSAL MATE-N-LOK™ CAP OR HEADER.
- SMALL NICKS ARE PERMITTED ON THE CIRCUIT TOWERS WHICH COULD INCREASE THE INITIAL HOUSING MATING FORCE BY UP TO 4.4 NEWTONS [1.0] LBS. NO INDIVIDUAL NICKED TOWER SHALL INCREASE THIS FORCE BY OVER 2.2 NEWTONS [.5] LBS.
- DIMENSION INDICATED IS AS MOLDED. ADDITIONAL GROWTH DUE TO SUBSEQUENT MOISTURE ABSORPTION MAY OCCUR.
- FOUR RIBS EQUALLY SPACED, NO SPECIFIC ORIENTATION, NO RIBS OR SIX RIBS EQUALLY SPACED, NO SPECIFIC ORIENTATION, OPTIONAL.
- NOT MANUFACTURED IN THE UNITED STATES.
- UNDERWRITERS RECOGNIZED COMPONENT LOGO AND CSA CERTIFICATION LOGO TO BE LOCATED ONCE ON EACH SIDE OF HOUSING.
- NYLON, UL94V-0.



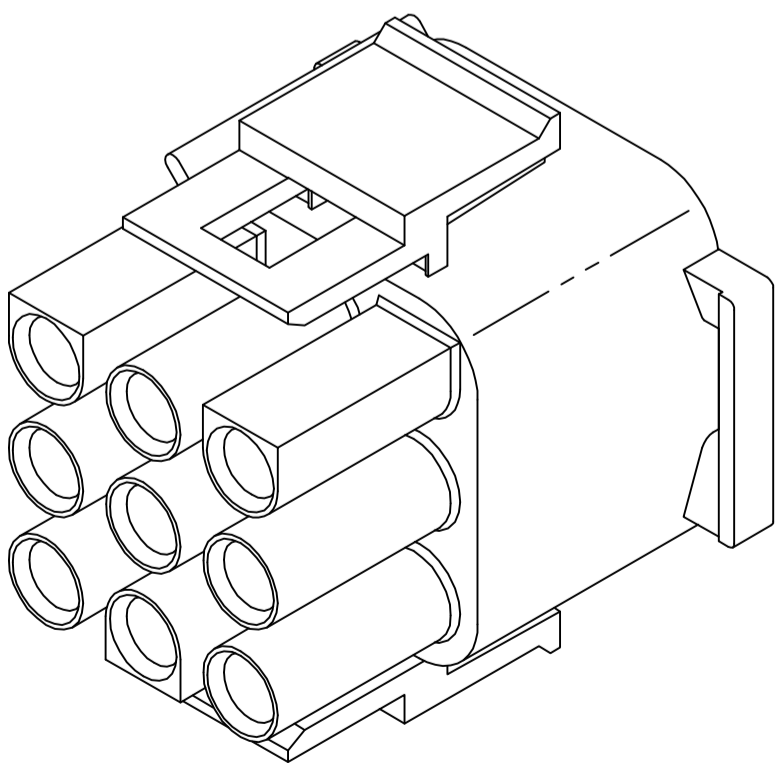
VIEW A-A
350720-4 ONLY



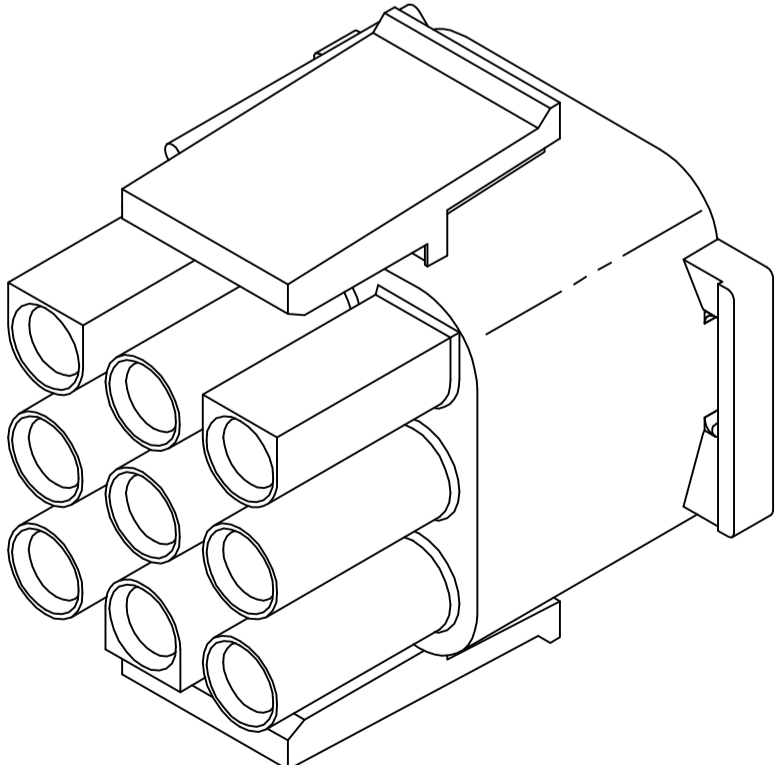
DETAIL A
OPTIONAL CONSTRUCTION



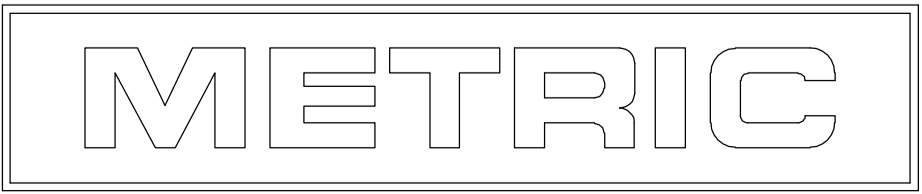
DETAIL B
350720-4 ONLY



350720-4 3-DIMENSIONAL MODEL
NOT TO SCALE



3-DIMENSIONAL MODEL
NOT TO SCALE



THIS DRAWING IS A CONTROLLED DOCUMENT.		DWN S. HAMM	07JUN01	tyco Electronics		Tyco Electronics Corporation Harrisburg, PA 17105-3608	
DIMENSIONS: mm [INCHES]		CHK S. RIDGILL	07JUN01			NAME	
TOLERANCES UNLESS OTHERWISE SPECIFIED:		APVD S. RIDGILL	07JUN01	PRODUCT SPEC		PLUG, 9 CIRCUIT, UNIVERSAL MATE-N-LOK™	
0 PLC ± -		APPLICATION SPEC		SIZE		RESTRICTED TO	
1 PLC ± -		WEIGHT		A1 00779		C=350720	
2 PLC ± 0.13 [.005]		CUSTOMER DRAWING		SCALE 4:1		SHEET 1 OF 1	
3 PLC ± -						REV AA1	
4 PLC ± -							
ANGLES ± '30'							
FINISH -							