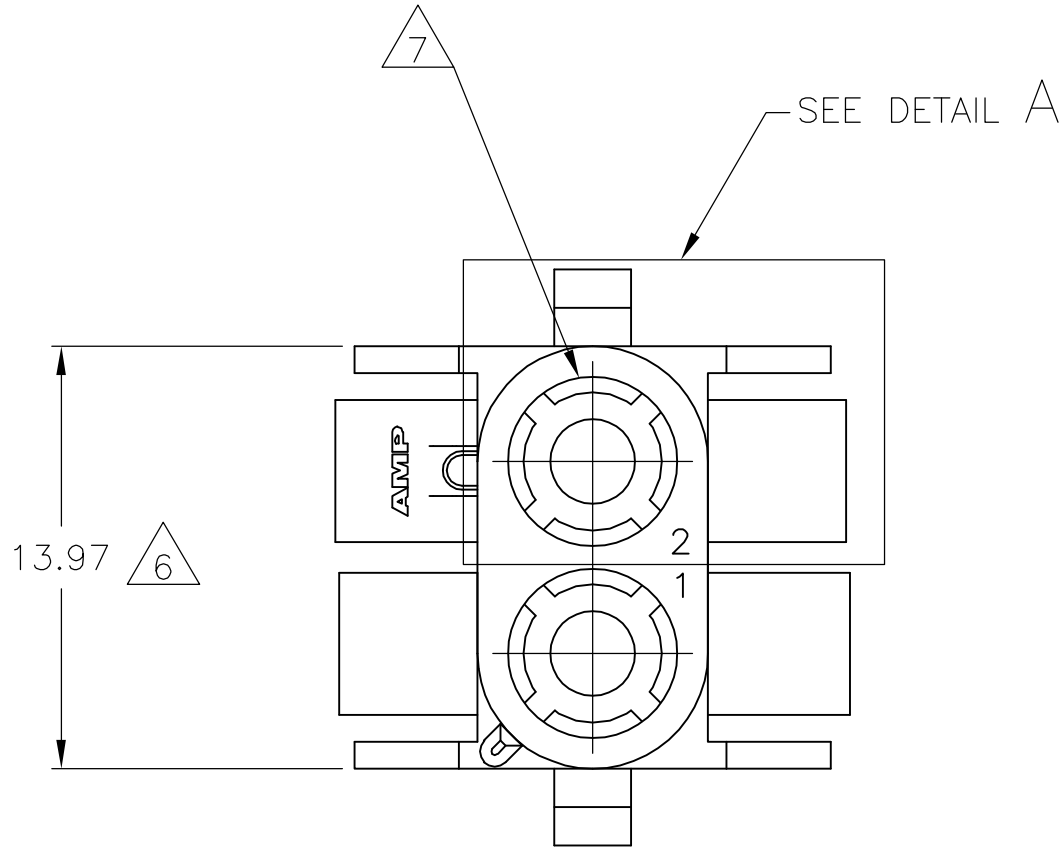
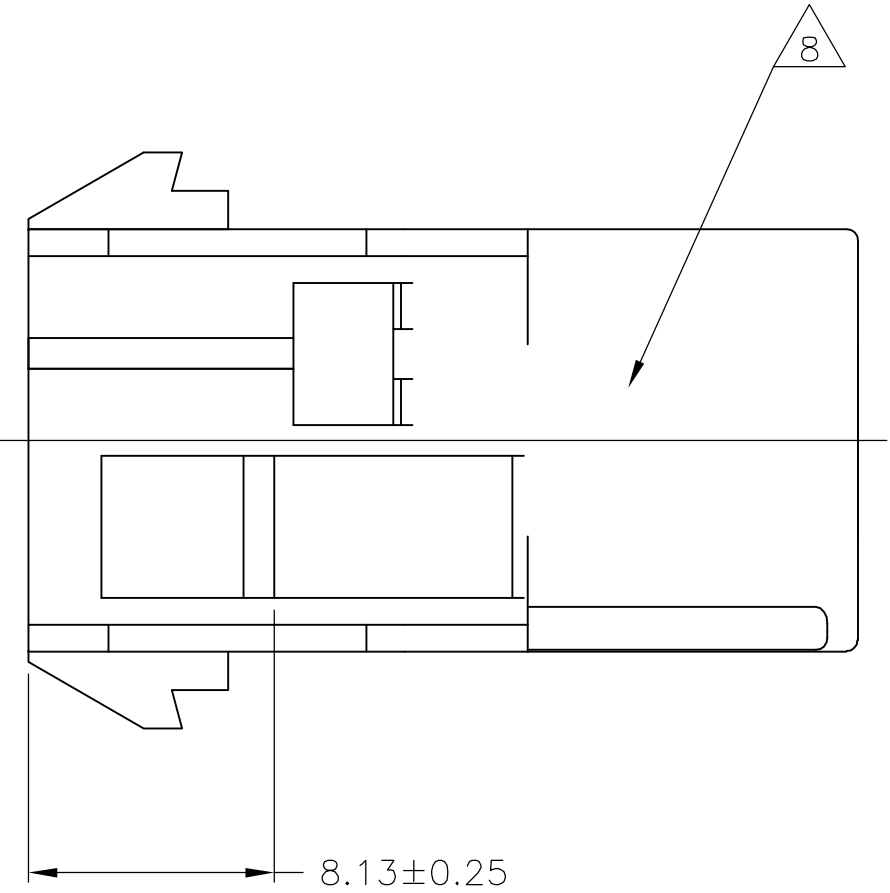
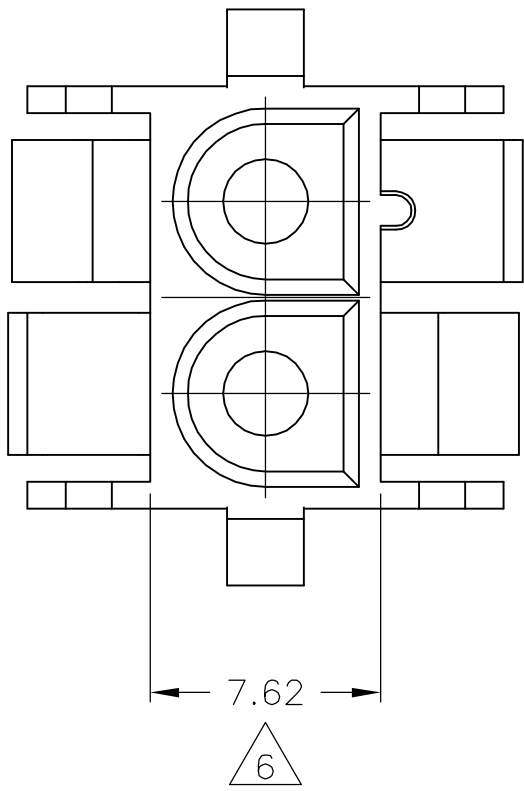


| LOC | | DIST | | REVISIONS | | | |
|-----|-----|---------------|--|-----------|-----|------|--|
| P | LTR | DESCRIPTION | | DATE | DWN | APVD | |
| | | | | | | | |
| | V1 | ECO-06-018902 | | 21AUG06 | BSV | GSR | |



1. MATES WITH APPROPRIATE UNIVERSAL MATE-N-LOK™ PLUG.
2. RECOMMENDED PANEL THICKNESS 0.76 - 2.29.
3. PANEL MUST BE PUNCHED SO THAT THE HOUSING ENTERS THE PANEL IN THE SAME DIRECTION AS THE PUNCH.

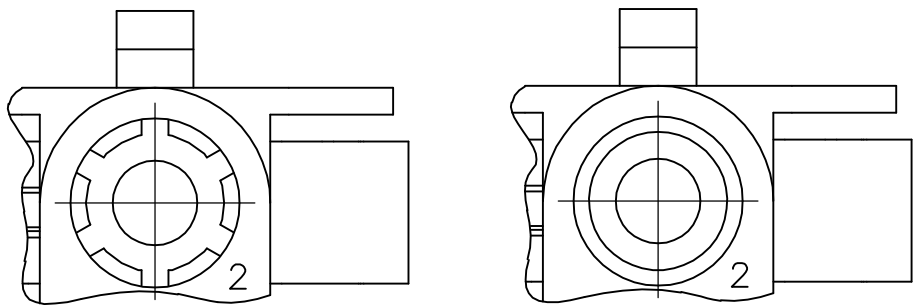
4. OPTIONAL FOR KEYING HOUSING IN PANEL.

5. CIRCUIT NUMBER 1 LOCATION.

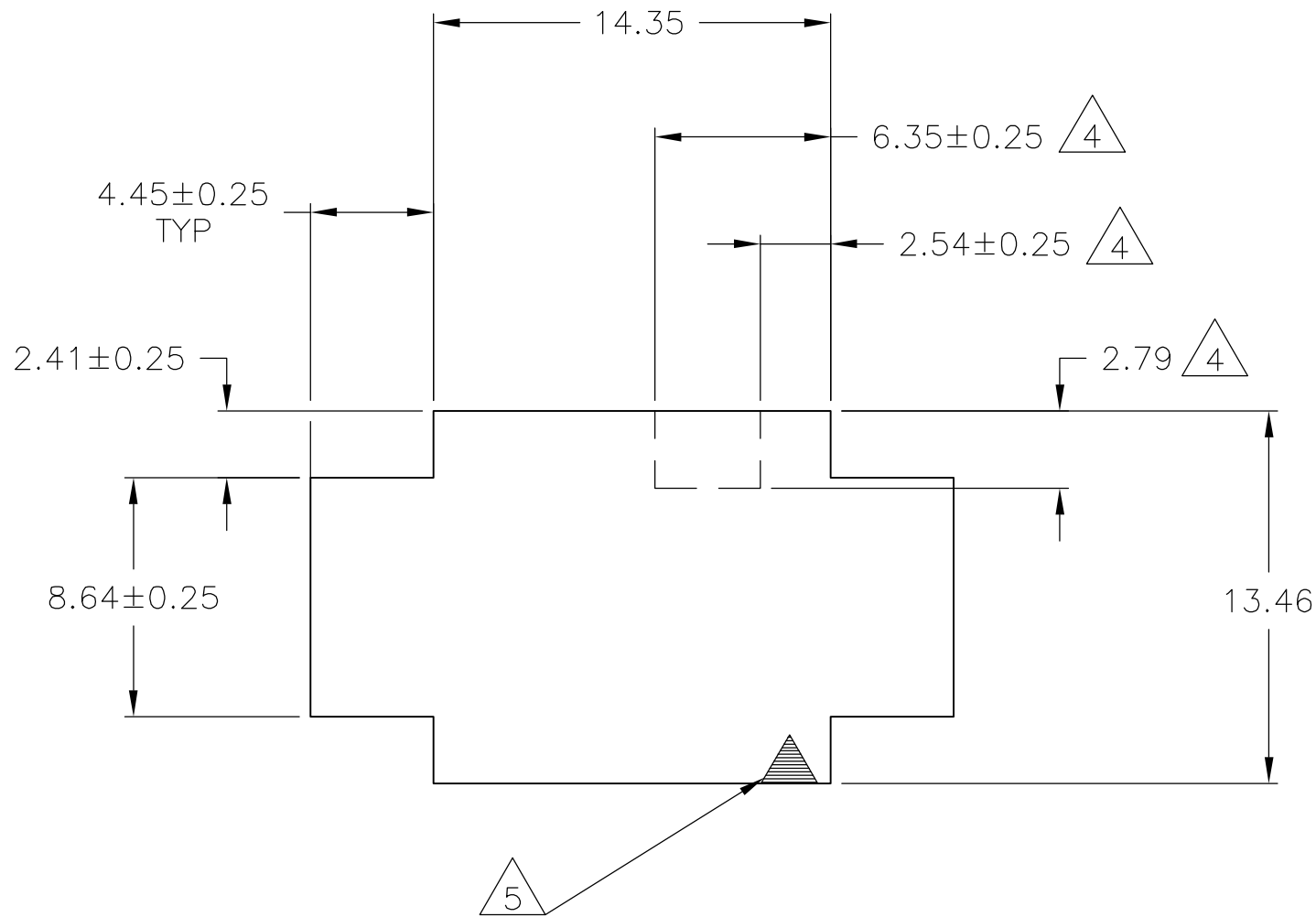
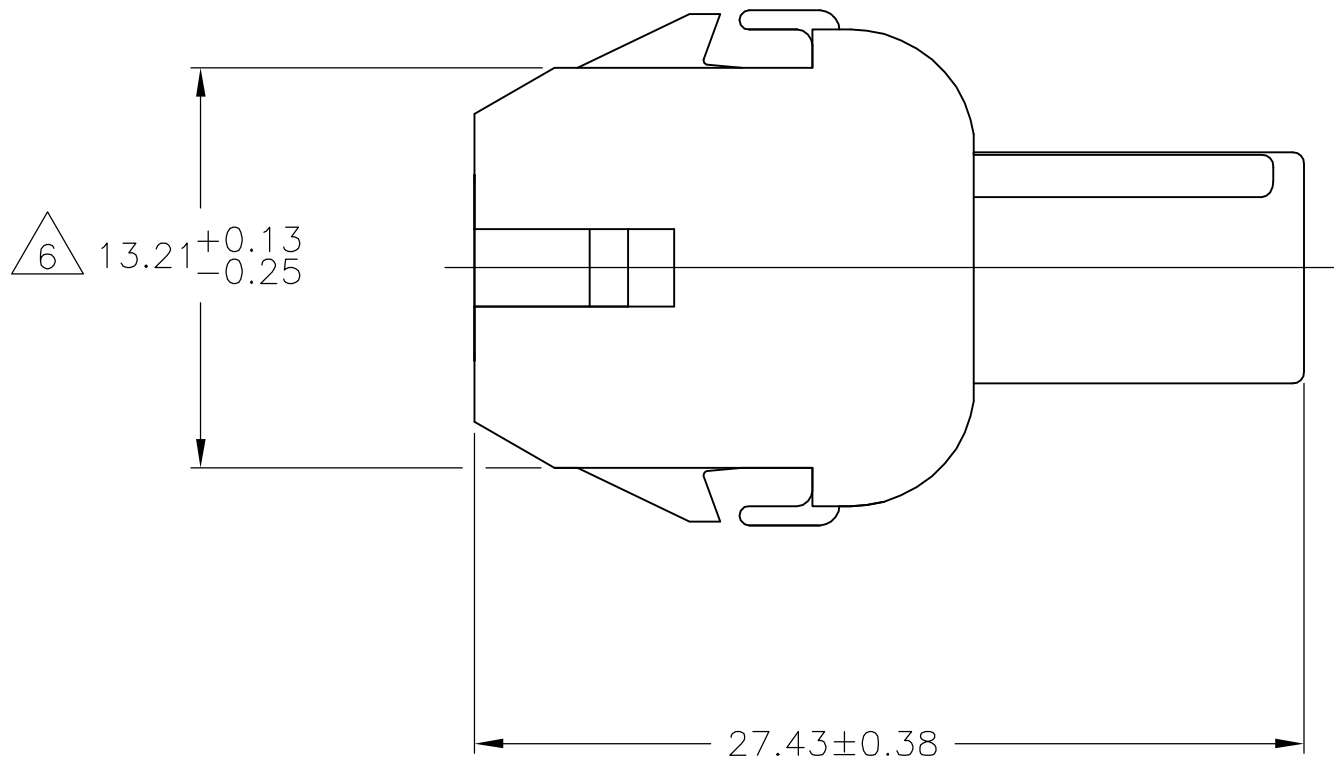
6. DIMENSION INDICATED IS AS MOLDED. ADDITIONAL GROWTH DUE TO SUBSEQUENT MOISTURE ABSORPTION MAY OCCUR.

7. FOUR RIBS EQUALLY SPACED, NO SPECIFIC ORIENTATION. NO RIBS OR SIX RIBS EQUALLY SPACED, NO SPECIFIC ORIENTATION, OPTIONAL.

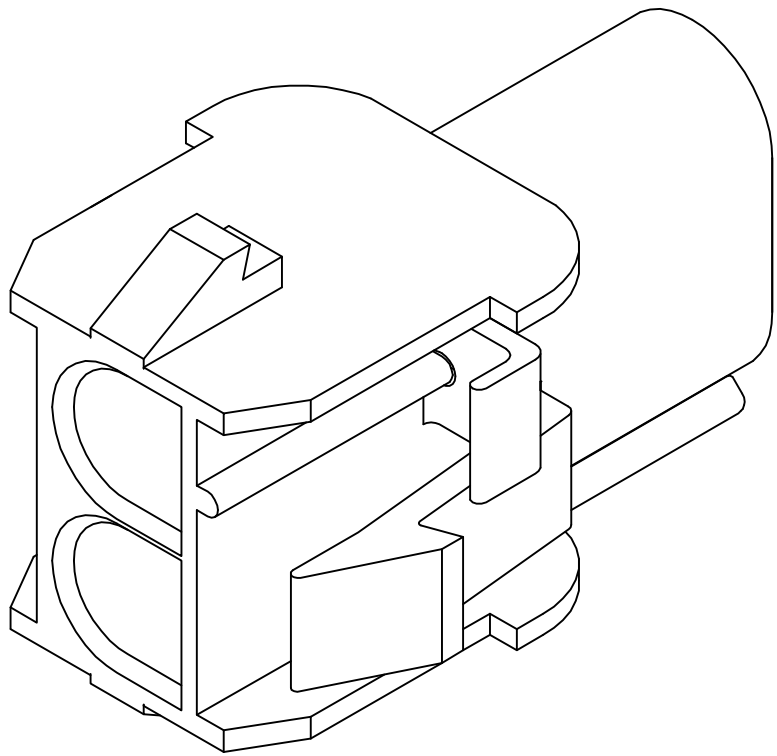
8. UNDERWRITERS RECOGNIZED COMPONENT LOGO AND CSA CERTIFICATION LOGO TO BE LOCATED ONCE EACH ON SIDE OF HOUSING.



DETAIL A
OPTIONAL CONSTRUCTIONS



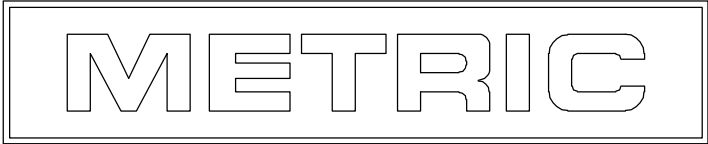
RECOMMENDED PANEL CUT OUT



3-DIMENSIONAL MODEL
NTS

| | | | |
|------|------|-------|-------|
| 4.45 | .175 | 27.43 | 1.080 |
| 2.79 | .110 | 14.35 | .565 |
| 2.54 | .100 | 13.97 | .550 |
| 2.41 | .095 | 13.46 | .530 |
| 2.29 | .090 | 13.21 | .520 |
| 0.76 | .030 | 8.64 | .340 |
| 0.38 | .015 | 8.13 | .320 |
| 0.25 | .010 | 7.62 | .300 |
| 0.13 | .005 | 6.35 | .250 |
| MM | IN | MM | IN |

CONVERSION TABLE



| | | | | | | | | | | | | | |
|--|--|---|--|--------------------|---------|---|--|---|--|---------------|--|--------|--|
| THIS DRAWING IS A CONTROLLED DOCUMENT. | | | | DWN K. WHITAKER | 24JUL92 | tyco <i>Electronics</i> | | Tyco Electronics Corporation Harriaburg, Pa 17105-3608 | | | | | |
| DIMENSIONS: | | TOLERANCES UNLESS OTHERWISE SPECIFIED: | | CHK R. SWING | 24JUL92 | NAME CAP.2 CIRCUIT, UNIVERSAL MATE-N-LOK™ | | | | | | | |
| mm | | D. SELF | | 27JUL92 | | | | | | | | | |
| | | 0 PLC ± - | | APVD | | PRODUCT SPEC | | | | | | | |
| | | 1 PLC ± - | | D. SELF | | | | | | | | | |
| | | 2 PLC ± 0.13 | | APPLICATION SPEC | | | | | | | | | |
| | | 3 PLC ± - | | SIZE | | | | | | | | | |
| 4 PLC ± - | | ANGLES ± 1° | | FINISH | | CAGE CODE | | DRAWING NO | | RESTRICTED TO | | | |
| MATERIAL NYLON,UL 94V-0 | | - | | WEIGHT | | A1 | | 00779 | | C=350778 | | - | |
| CUSTOMER DRAWING | | | | SCALE | | 4:1 | | SHEET | | 1 of 1 | | REV V1 | |

| | |
|---------|------------|
| BLACK | 1-350778-9 |
| GRAY | 1-350778-8 |
| BLUE | 1-350778-6 |
| GREEN | 1-350778-5 |
| YELLOW | 1-350778-4 |
| ORANGE | 1-350778-3 |
| RED | 1-350778-2 |
| BROWN | 1-350778-1 |
| NATURAL | 350778-1 |
| COLOR | PART NO |