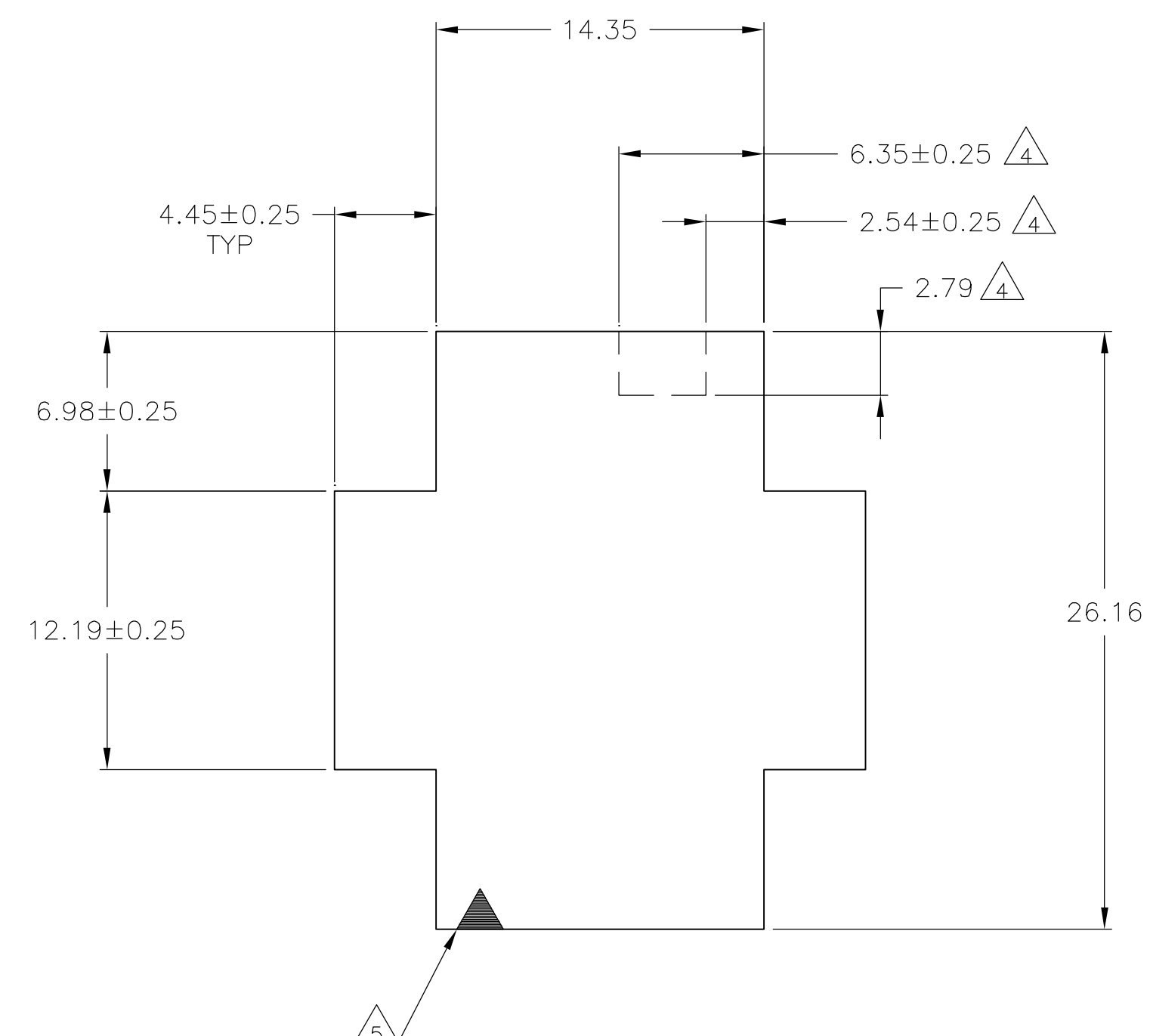
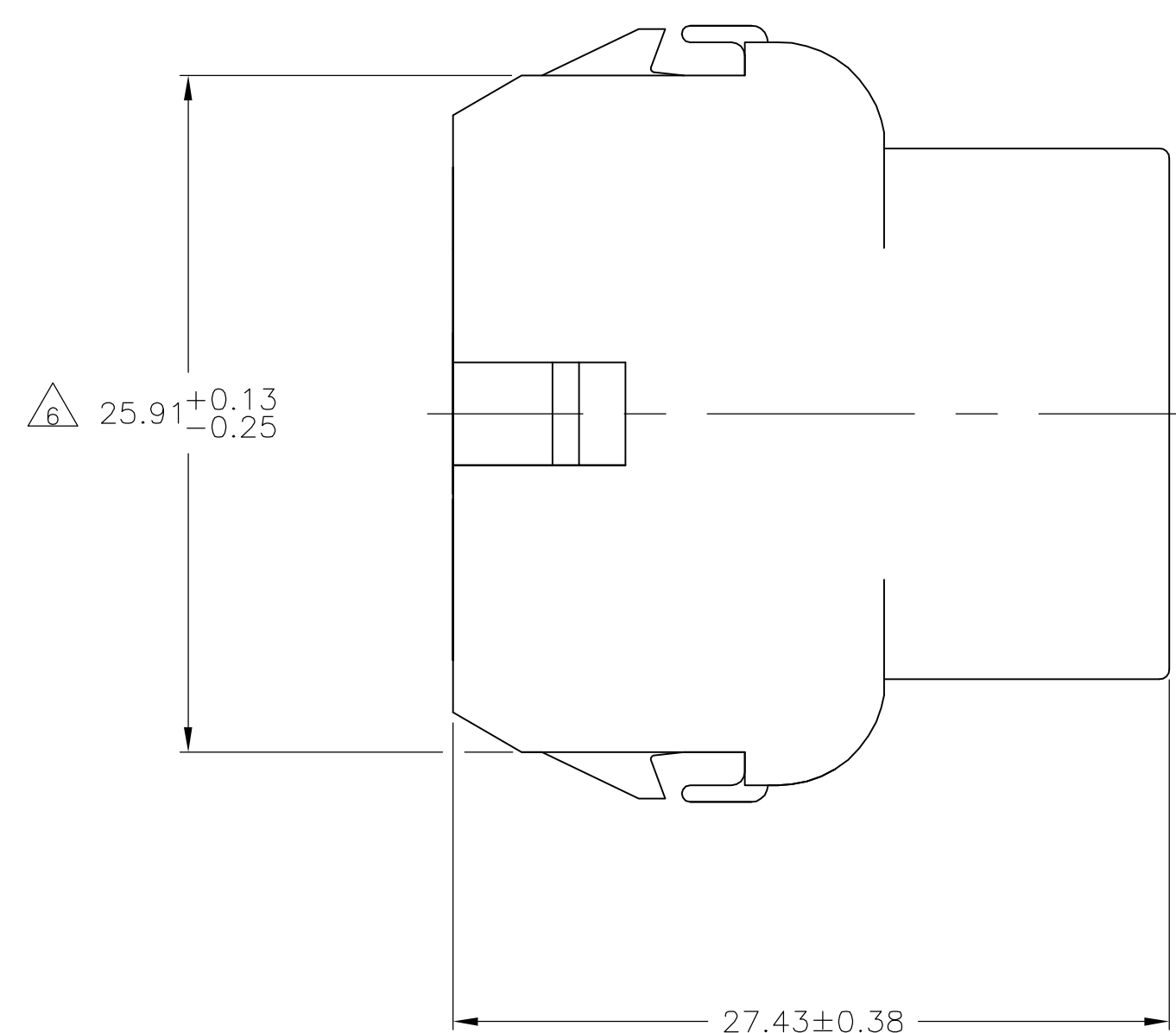
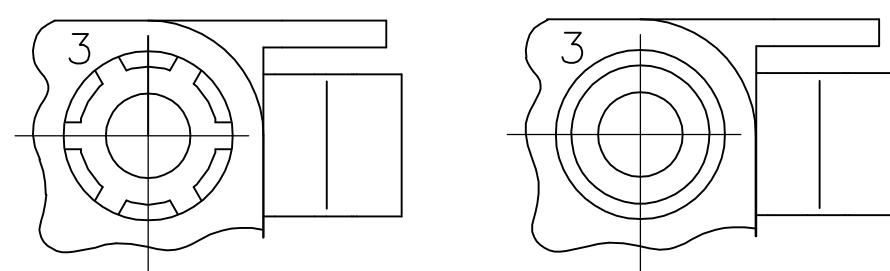
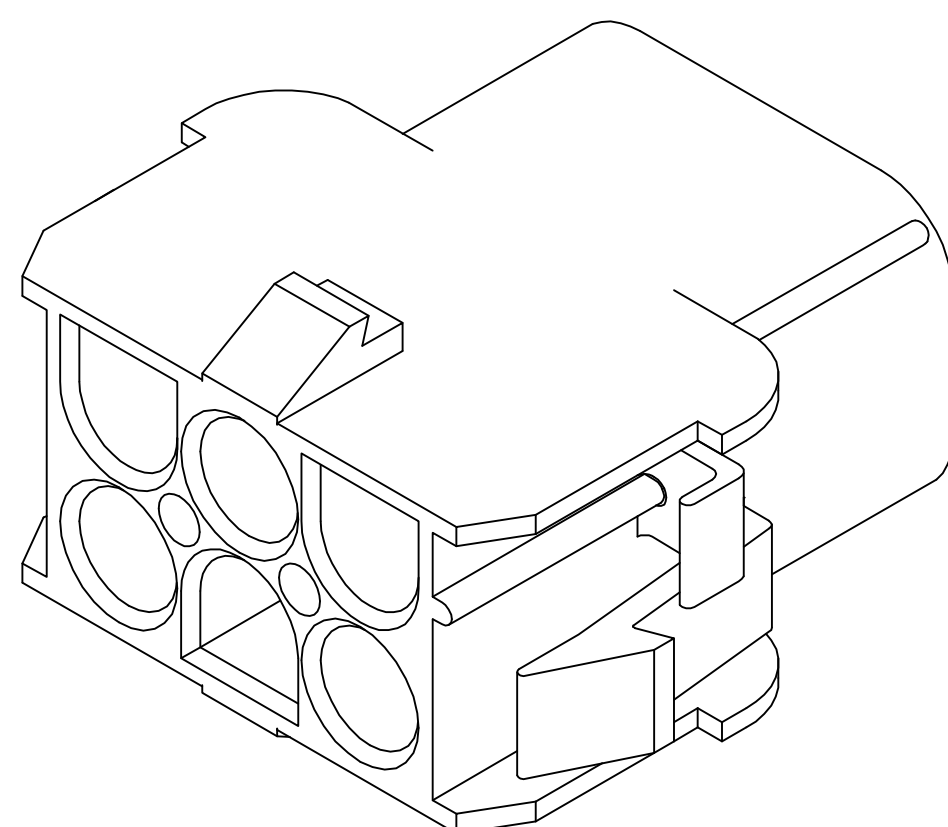


1. MATES WITH APPROPRIATE UNIVERSAL MATE-N-LOK™ PLUG.
2. RECOMMENDED PANEL THICKNESS 0.76 – 2.29.
3. PANEL MUST BE PUNCHED SO THAT THE HOUSING ENTERS THE PANEL IN THE SAME DIRECTION AS THE PUNCH.
4. OPTIONAL FOR KEYING HOUSING IN PANEL.
5. CIRCUIT NUMBER 1 LOCATION.
6. DIMENSION INDICATED IS AS MOLDED. ADDITIONAL GROWTH DUE TO SUBSEQUENT MOISTURE ABSORPTION MAY OCCUR.
7. FOUR RIBS EQUALLY SPACED, NO SPECIFIC ORIENTATION. NO RIBS OR SIX RIBS EQUALLY SPACED, NO SPECIFIC ORIENTATION, OPTIONAL.
8. UNDERWRITERS RECOGNIZED COMPONENT LOGO AND CSA CERTIFICATION LOGO TO BE LOCATED ONCE EACH ON SIDE OF HOUSING.

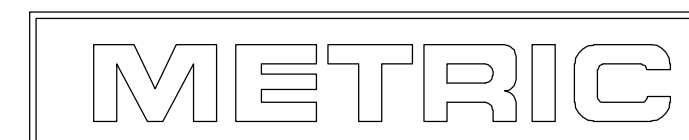



RECOMMENDED PANEL CUT OUT



6.35	.250	27.43	1.080
4.45	.175	26.16	1.030
2.79	.110	25.91	1.020
2.54	.100	20.32	.800
2.29	.090	14.35	.565
0.76	.030	13.97	.550
0.38	.015	12.19	.480
0.25	.010	8.13	.320
0.13	.005	6.99	.275
MM	IN	MM	IN

CONVERSION TABLE



THIS DRAWING IS A CONTROLLED DOCUMENT.		DIN 1 29JUN92 K. WHITAKER CHK 29JUN92 R. SWING APPROVED 02JUL92 D. SELF PRODUCT SPEC — APPLICATION SPEC —		tyco <i>Electronics</i> Tyco Electronics Corporation Harrisburg, Pa 17105-3608	
DIMENSIONS: mm 		TOLERANCES UNLESS OTHERWISE SPECIFIED: 0 PLC ± — 1 PLC ± — 2 PLC ± 0.1 3 PLC ± — 4 PLC ± — ANGLES ± 1° FINISH —		NAME R. SWING UNIVERSAL MATE-N-LOK™	
MATERIAL: NYLON, UL 94V-0		WEIGHT —		SIZE A1	CAGE CODE 00779
		CUSTOMER DRAWING		DRAWING NO C-350781	RESTRICTED TO —
				SCALE 4:1	SHEET 1 OF 1 REV W