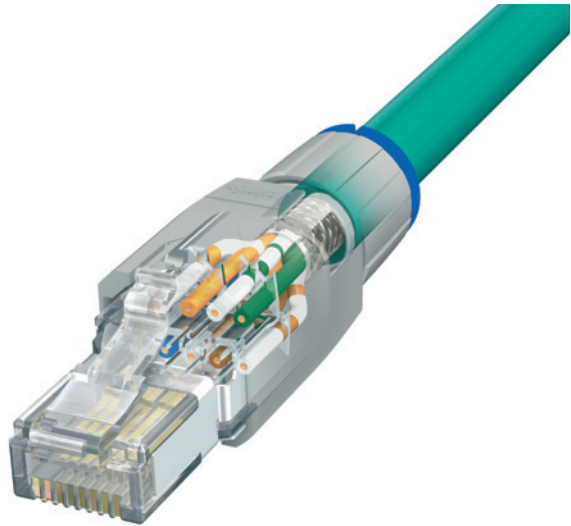


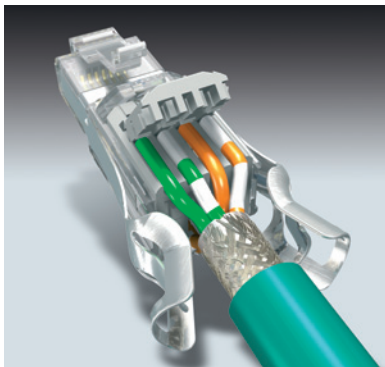
VARIOSUB RJ45 QUICKON IP20 CAT5e connector, with fast connection system

Description

The VARIOSUB RJ45 QUICKON in IP20 protection is the first industrial 8-pos. RJ45 connector that utilizes the fast connection technology. It fulfills the requirements of IAONA for use in light duty areas and is suitable as a CAT5e component for Fast Ethernet transmission at 100 mbps. The connection system can be operated without additional tools and can accommodate solid and stranded wires of AWG 26-22.



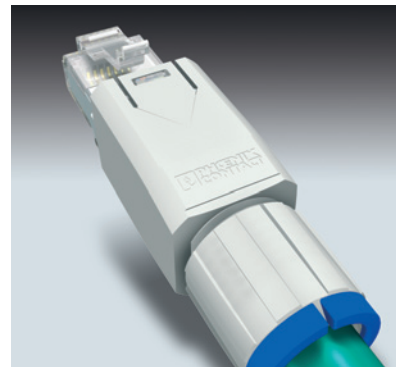
Easy assembly:



Insert the conductor



Close the locking mechanism



Mount the housing – Finished

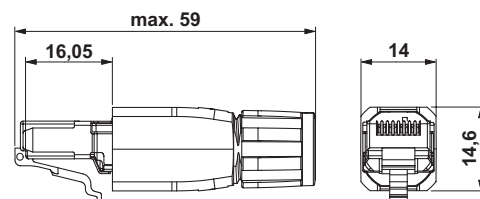
RJ45 connector

Technical data (CAT5e)

Basic standard IEC 60603-7 RJ45, Category 5;
CD ISO/IEC 11801:2002, EN 50173:2002,
EIA/TIA 568B:2001



Description	Type	Order No.	Pcs./Pkt.
RJ45 connector, IP20, with QUICKON fast connection system, CAT5e, 8-pos., for 1 to 7-wire cores AWG 26-22, for cable diameters of 4.5 - 8.0 mm	VS-08-RJ45-5-Q/IP20	1656725	1
Coding set, for color coding of the RJ45 QUICKON connector, consisting of 80 color rings, 10 rings in each color: white, blue, red, green, yellow, violet, brown, gray	VS-08-RJ45-Q-COD-SET	1656893	1
Mechanical data			
Number of pos.	8		
Degree of protection	IP20		
Inflammability class in acc. with UL 94	V0		
Insertion/withdrawal cycles	>1000		
Material			
Contact	CuSn6 (bronze)		
Contact surface	>1.2 µm Au on 1.2 µm Ni		
Surface IDC	approx. 5 µm tin-plated (lead-free)		
Contact carrier	PC		
Housing	PA		
Shielding	CuZn (brass), 3 µm hot-dip galvanized		
Temperature ranges			
Storage temperature [°C]	-40 ... +70		
Operating temperature [°C]	-20 ... +70		
Connecting temperature [°C]	-10 ... +60		
Core cross section			
Solid conductors (1-wire) AWG / [mm²]	26 ... 22 / 0,13 ... 0,32		
Litz wire (7-wire) AWG / [mm²]	26 ... 22 / 0,14 ... 0,36		
Insulation diameter [mm]	≤ 1,60		
Cable diameter [mm]	4,5 ... 8		
Connection type	IDC /insulation displacement contacts in acc. with IEC 60352-4		
Cable strain relief [N]	> 50		
Shield contacting	covering a large surface > 180° (on cable shield)		
Electrical data			
Rated voltage [V]	50		
Rated current [A]	1.75 (at 20°C)		
Transmission characteristics	CAT5e		
Surge voltage category	I		
Contamination class	1		
Insulation resistance [MΩ]	> 500 (100 V)		
Contact resistance			
Solid conductors – IDC [mΩ]	< 1		
Litz wire – IDC [mΩ]	< 5		
Dielectric strength			
Contact – Contact [V]	> 1000, 1 min.		
Shield – Contact [V]	> 1500, 1 min.		



VS-08-RJ45-5-Q/IP20